



# Electronic Automatic Focuser

## Detailed Installation and Operations Manual



苏州振旺光电有限公司

Suzhou ZWO Co.,Ltd.

*Thank you for purchasing the ZWO EAF. This guide will give you a brief introduction to the installation of your new Electronic Automatic Focuser. Please take the time to read it thoroughly and if you have any other questions, feel free to contact our support team at [info@zwoptical.com](mailto:info@zwoptical.com)*

## **Welcome to Your New Focuser Experience**

The EAF is a high quality Electronic Automatic Focuser (EAF) designed to suit a wide range of Optical Tube Assemblies (OTA). It is supplied with a versatile mounting bracket system suitable for flexible installation across a wide range of telescope focuser systems.

## **Product Description**

The ZWO EAF is an all metal bodied electronic focus drive system designed for installation across a wide range of Optical Tube Assemblies. The flexible mounting system allows installation across refractors, Newtonians, Cassegrain and many other telescope designs. The included accessories provide for a quick and simple installation using the supplied hardware and wrenches.

Finished in an attractive red anodised finish, the EAF's original design will grace any telescope. The EAF logo uses the Airy spot as an embellishment to reflect its precise focusing performance.

The EAF utilises a 35mm stepper motor which is subdivided into 5760 steps capable of being accurately positioned at any angle.



## Features (Standard Version)

- **High quality metal focuser** with anodized finish.
- **Precise focus control** for planetary and deep sky imaging.
- Can be used in both **autofocus and manual modes**.
- **Flexible installation** for use on a variety of refractors, Newtonians, schmidt cassegrain and other Optical Tube Assemblies.
- **Versatile mounting bracket system** with other adapters available for purchase.
- **ASCOM/INDI compatible drivers** available for download – interfaces with many well-known astronomy software packages.
- **ASICAP support** built in.
- **Native support in ASIAIR** Version 1.1 onwards.
- Integrated **USB interface**.
- Powered by 12V DC 0.5A.

## Features (Advanced Version)

In addition to the features of the Standard version, the Advanced version offers:

- Temperature sensor
- Hand controller

## Supplied Accessories



1. **EAF Body** contains the focuser motor and controller.
2. **Motor Bracket** for attaching the body to the OTA focuser assembly.
3. **Flexible Coupling** to attach the focus motor shaft to the OTA focuser drive shaft.
4. **Mounting Hardware** – Spacers and screws to mount the focuser body.

5. **M4 and M5 Wrenches** for secure the shaft locking screws and bracket hex screws.
6. **USB 2.0 Cable** – connection of computers or ASIAIR to the focus controller.

## EAF Specifications

|   |   |
|---|---|
| <b>Construction Material</b>            | All metal, red anodised finish  |
| <b>Motor Specification</b>              | 35mm Stepper Motor  |
| <b>Subdivision Steps</b>                | 5760 steps  |
| <b>Torque</b>                           | 1.5N/M  |
| <b>Focuser Payload Limit</b>            | 5KG   |
| <b>Power Requirements</b>               | Voltage Range: 11~15V.<br>DC 12V@0.5A Recommended.<br>Connector - 5.5mm*2.1mm Centre Positive |
| <b>Data Interface</b>                   | USB 2.0   |
| <b>Sensor/Hand Controller Interface</b> | 3.5mm audio, Centre Positive  |

The ZWO EAF utilises a USB2.0 interface for data communication which supports ASCOM and can be used in association with a wide variety of astronomy software.

Planetary imagers can use ZWO's ASICAP or other third-party software packages such as SharpCap, FireCapture.

Deep sky astrophotographers can enjoy support from ZWO's ASIAIR or other well known packages such as Maxim DL, The SkyX, Sequence Generator Pro, Nebulosity and many more. Third party focus software such as FocusMax, is also supported.

Your EAF is also fitted with a small multi-function interface that supports a temperature sensor or external hand controller.

A dedicated temperature sensor can be connected to collect temperature data and allow focuser control from your chosen

software. The hand controller allows for manual control of focuser position and focus motor speed.

## Installation

Your EAF is supplied with a bracket for connection to a wide variety of focusers. The standard bracket supports:

SkyWatcher Astrophotography Reflectors, SkyWatcher Black Diamond, SkyWatcher Dobsonians, SkyWatcher Maksutov-Newtonians.

TS Optics,

Astro Tech,

Feather Touch,

SharpStar telescopes,

SkyRover telescopes,

Explore Scientific telescopes

.....

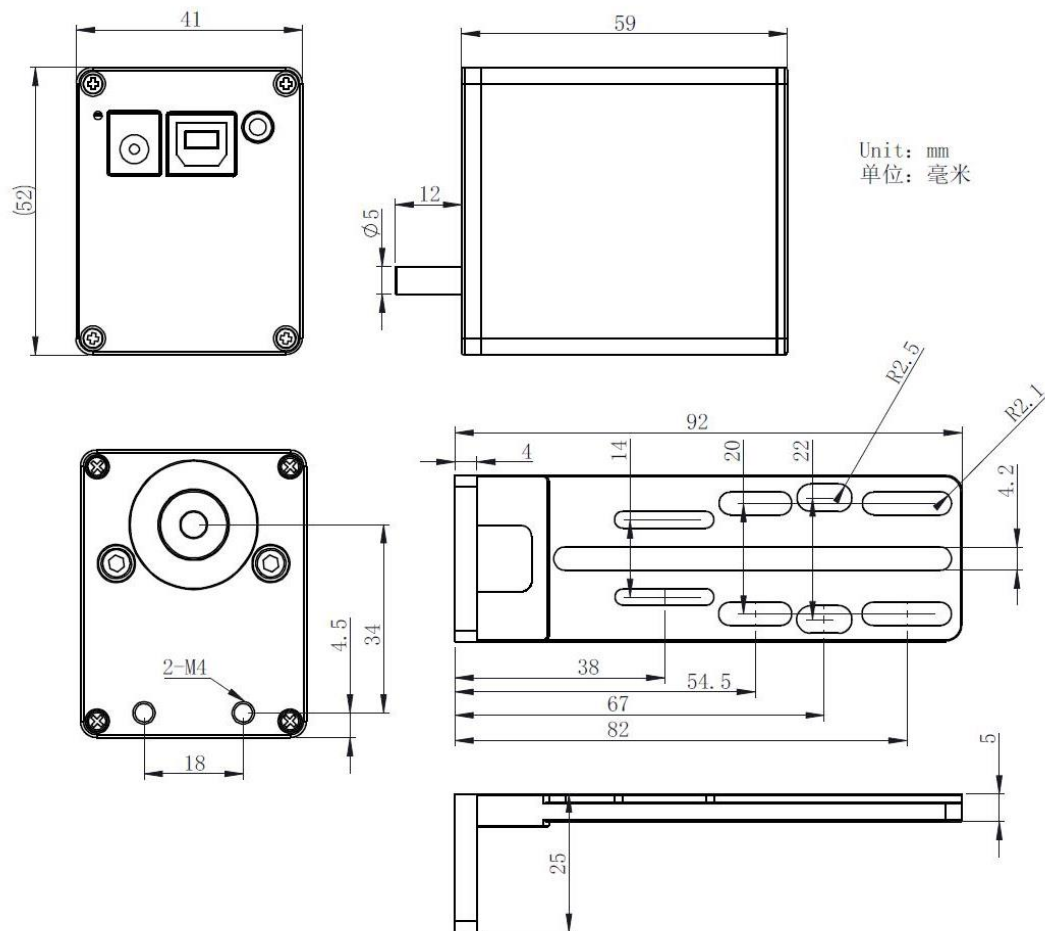
We recommend you refer to this instruction to confirm whether your telescopes and focusers are compatible to EAF.

<https://www.yuque.com/zwopkb/hardware/eaf-support-list#G2tSm>

You can also check the mechanical drawing below to estimate the compatibility by yourself.

A range of brackets for other telescopes are going to be available with time. Please keep your eyes on the ZWO site.

# Dimensions





Remove the coarse adjustment knob of the telescope focuser using a suitable sized wrench



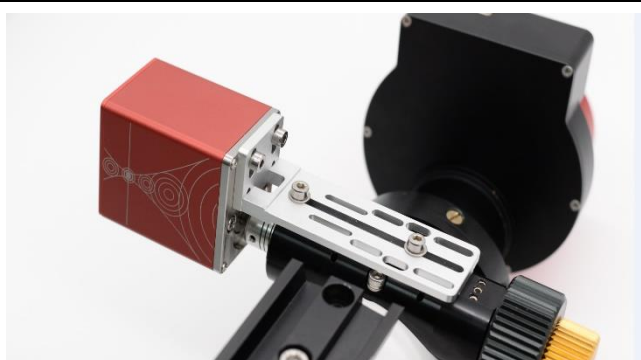
Install the flexible coupling on the telescope focuser shaft and tighten the lock screw



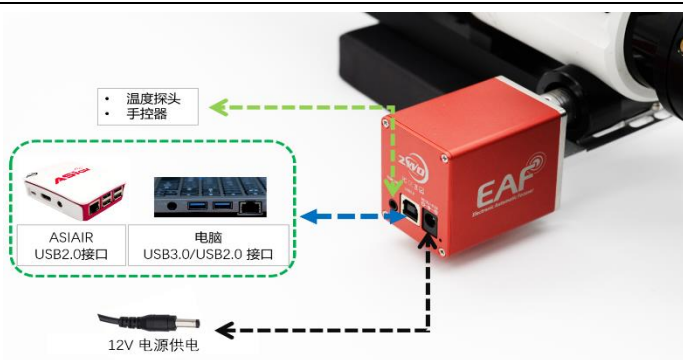
Attach the focuser body to the flexible coupler and tighten the lock screw using the supplied wrench



Secure the EAF body to the bracket and the bracket to the matching mounting holes in the focuser assembly using the supplied screws



Check all the mounting bracket is secure. This completes the hardware installation of the EAF. Download and install the required drivers from the ZWO website as required.



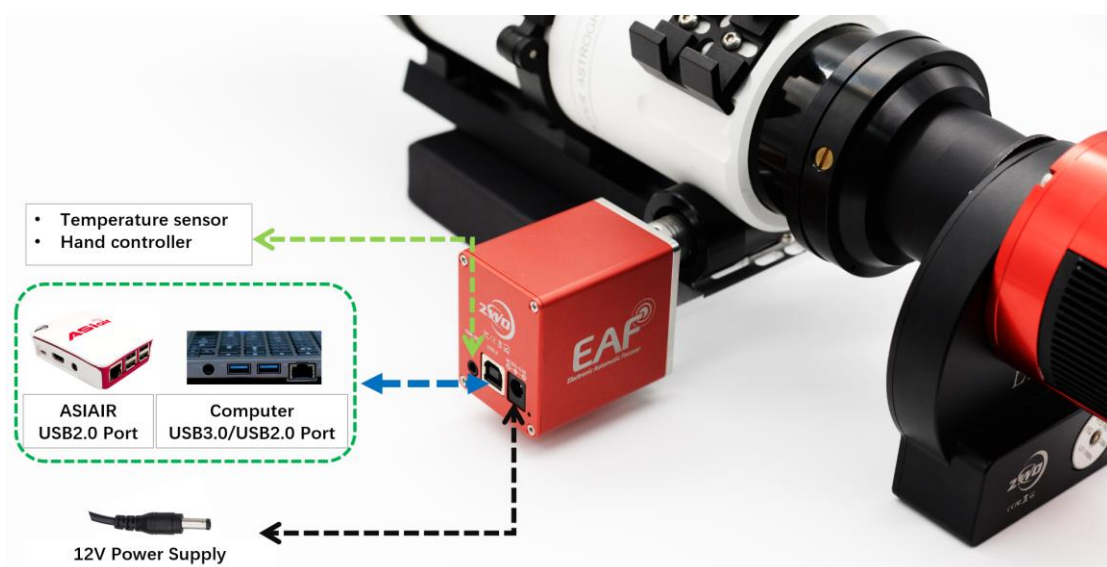
Connect the EAF to a 12V power supply and connect to the USB cable to a computer or ASI AIR.





For curved focusing seats, such as those on the Sharpstar and the Feathertouch focusers, you only need use the original locking screws and 3 spacers to fix the EAF. There are grooves on the bottom of the EAF connecting plate, and the single screw provides sufficient stability.

## Connecting your EAF



1. Connect your EAF to either a PC or ASIAIR using the USB port.
2. Attach an optional temperature probe or hand controller as required.
3. Connect 12V DC to the power socket.
4. Install ASCOM drivers as required.

## Software Installation and Configuration

### ASCOM Installation

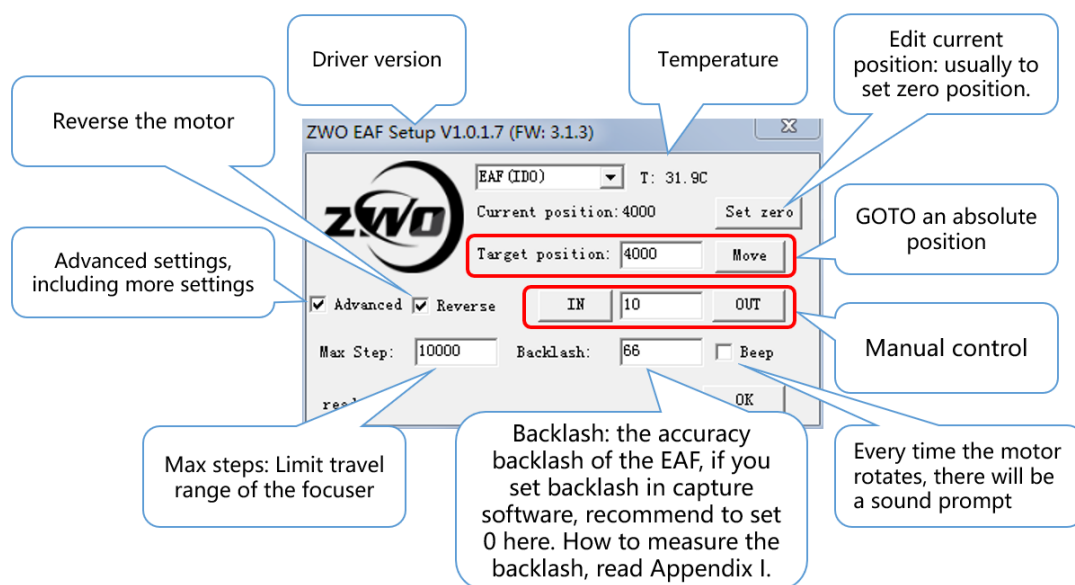
The latest version of ASICAP has native support for the EAF. Other software packages will require the use of an ASCOM driver.

EAF ASCOM drivers can be found on the ZWO website:

<https://astronomy-imaging-camera.com/software-drivers>

| ASCOM Drivers (optional) |  |   |  |
|--------------------------|--|---|--|
| ASCOM Platform           | After installing the ASCOM Platform, please install below ASCOM drivers, then you can use many 3rd party astro software through ASCOM.<br><b>Note:</b> This software is not from ZWO, we just provide another download node. <a href="#">Official Site</a> | v6.3                                    | <a href="#">Download</a><br><a href="#">Previous Version</a> |
| ASI Cameras              | ASI Cameras ASCOM driver to support our cameras.   | v1.0.3.23<br><a href="#">Change Log</a> | <a href="#">Download</a><br><a href="#">Previous Version</a> |
| EFW                      | Filter wheel ASCOM driver to support our EFW.  | v1.0.0.14<br><a href="#">Change Log</a> | <a href="#">Download</a><br><a href="#">Previous Version</a> |
| EAF                      | ASCOM driver to support our EAF.   | v1.0.1.6                                | <a href="#">Download</a>                                     |
| USBST4                   | Telescope ASCOM driver to support our USBST4 convertor.  | v1.0.1.16                               | <a href="#">Download</a>                                     |

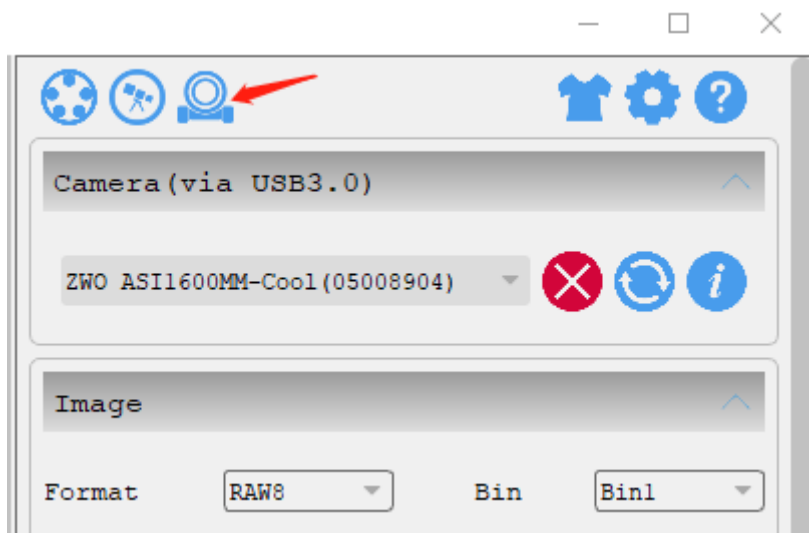
Download and install the ASCOM driver and launch the EAF dashboard from within your astronomy software.



## Connecting EAF to your Astronomy Software

### ASICAP

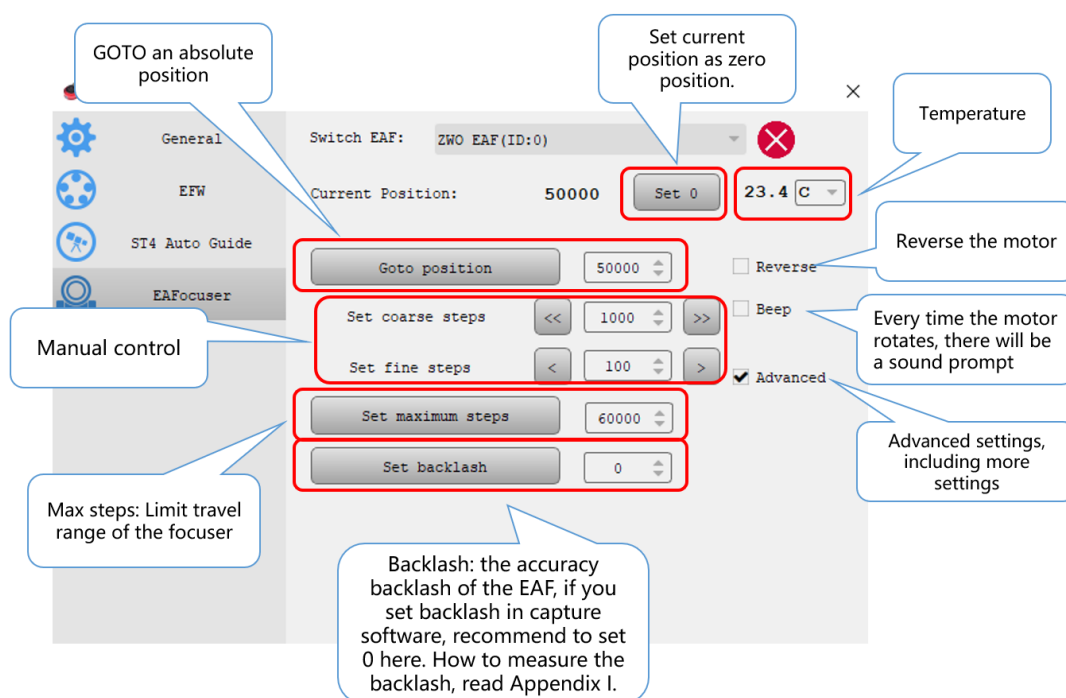
1. Open the focuser control panel.



2. choose the focuser that you connected.



3. Set suitable settings for your EAF.

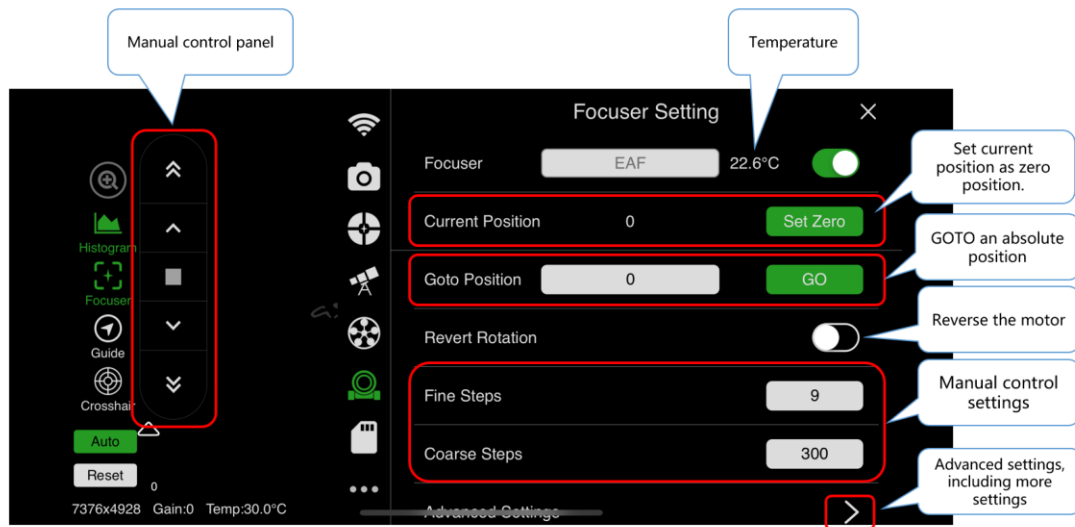


## ASIAIR

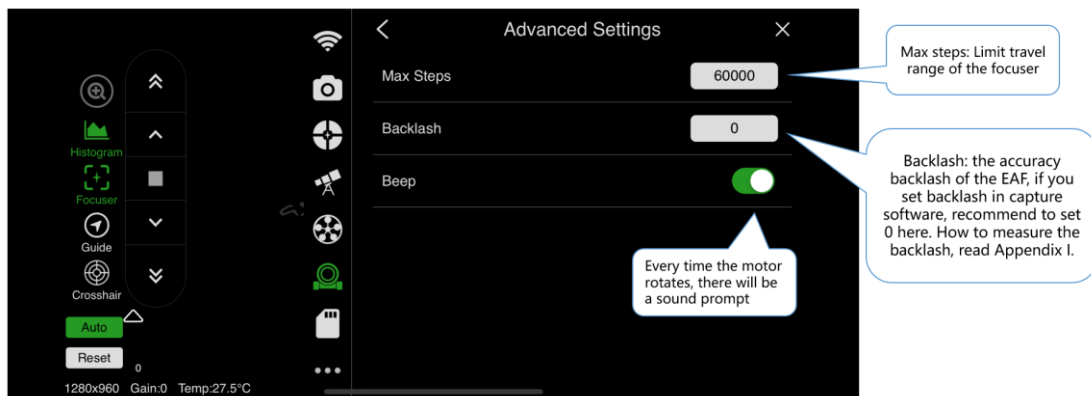
1. On the ASIAIR main screen find the icon for the EAF.



2. Click the icon and enter the EAF settings page.

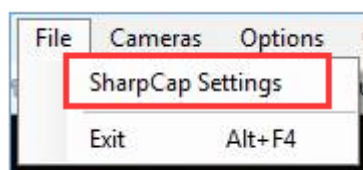


3. EAF Advanced Settings .

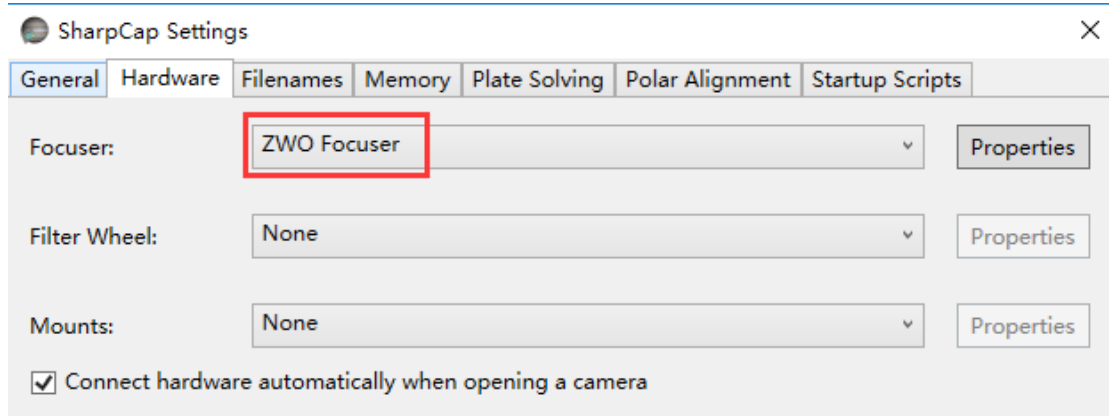


## SharpCap

1. Open SharpCap settings.

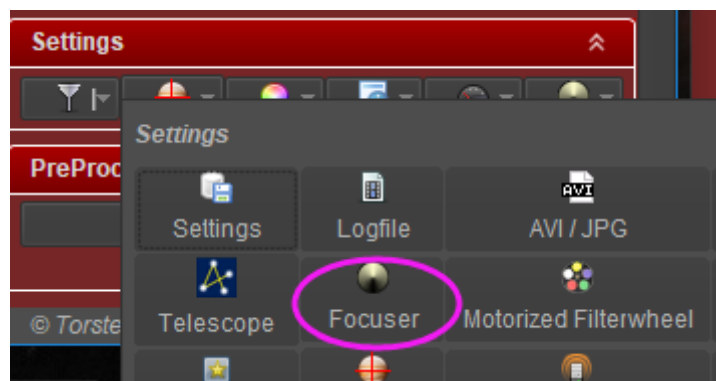


## 2.Choose ZWO focuser.

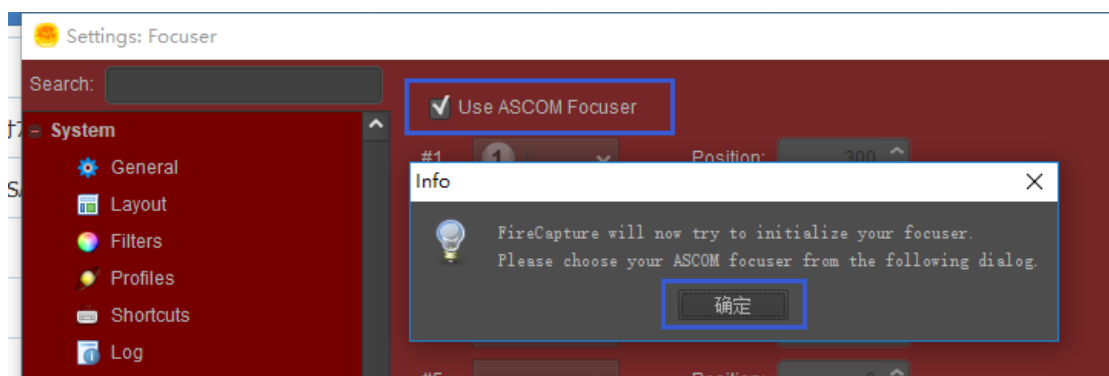


## FireCapture

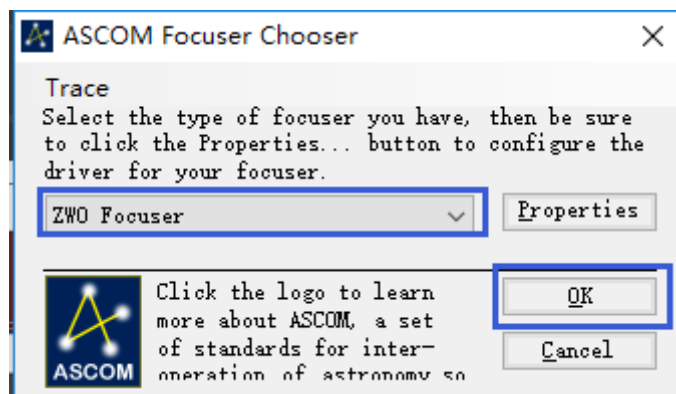
### 1.Open the focuser panel in settings menu.



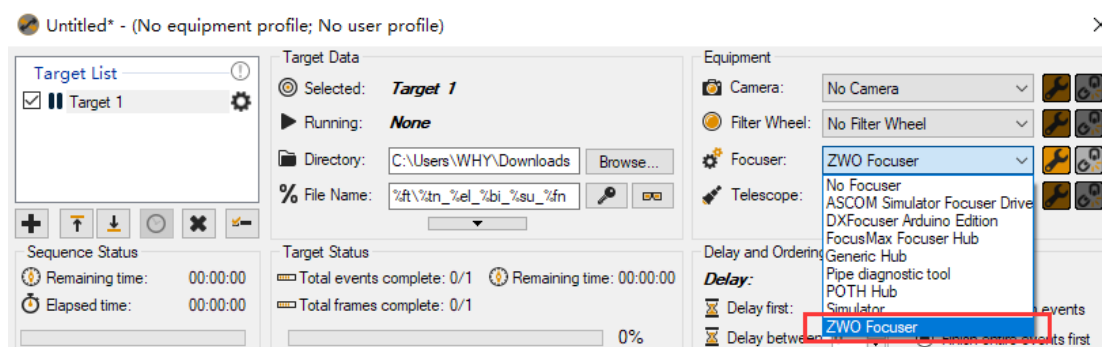
### 2.Check "Use ASCOM Focuser"



### 3. Choose ZWO Focuser in ASCOM panel.

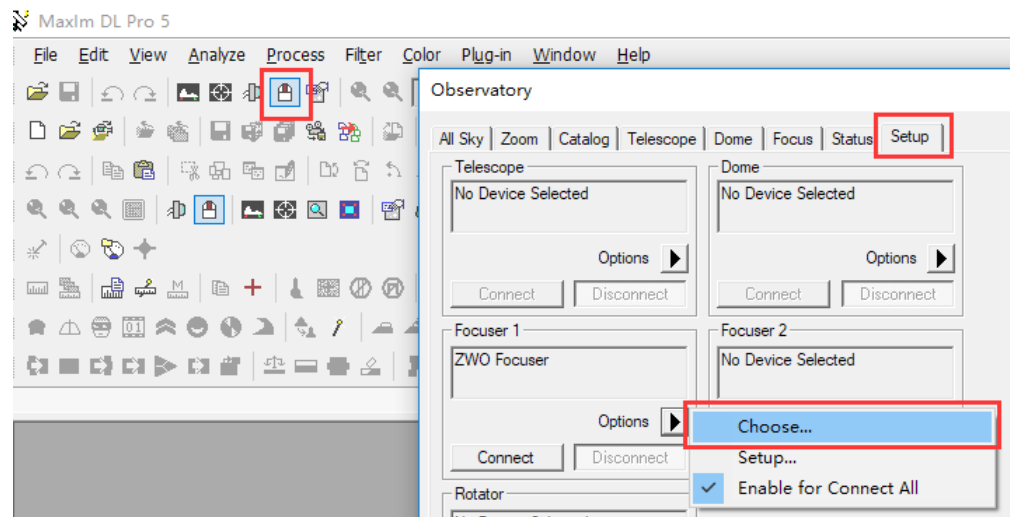


## Sequence Generator Pro

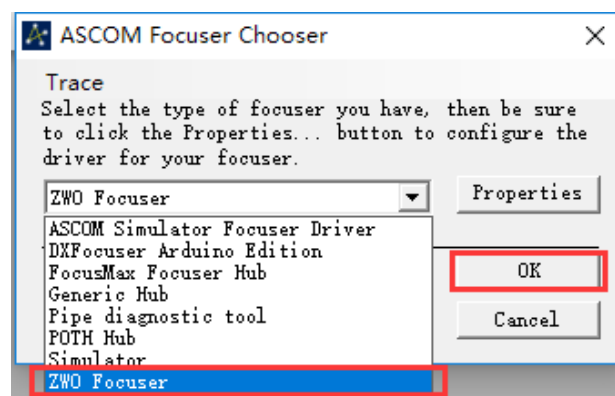


## Maxim DL Pro

1. Open "Observatory panel", in "Focuser 1" option, click "Choose...".



2. Choose ZWO Focuser in ASCOM panel.



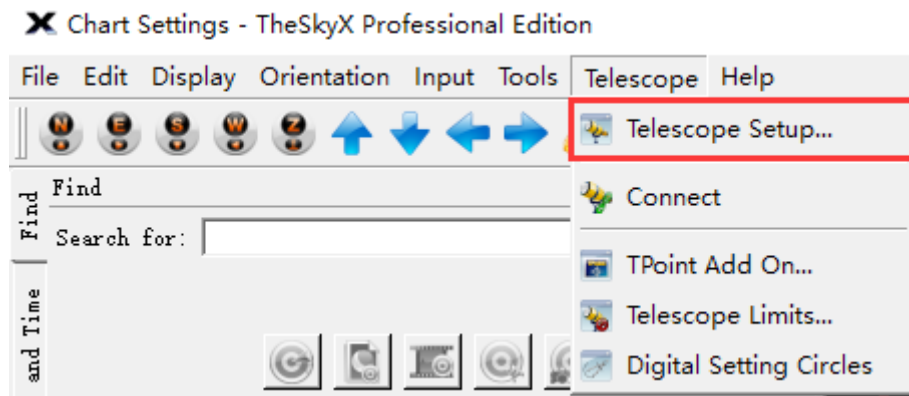
## Nebulosity

To be added

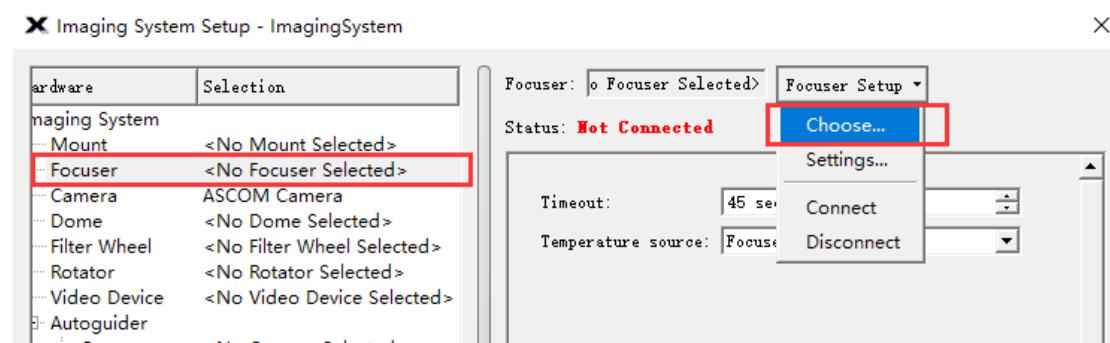


## The SkyX

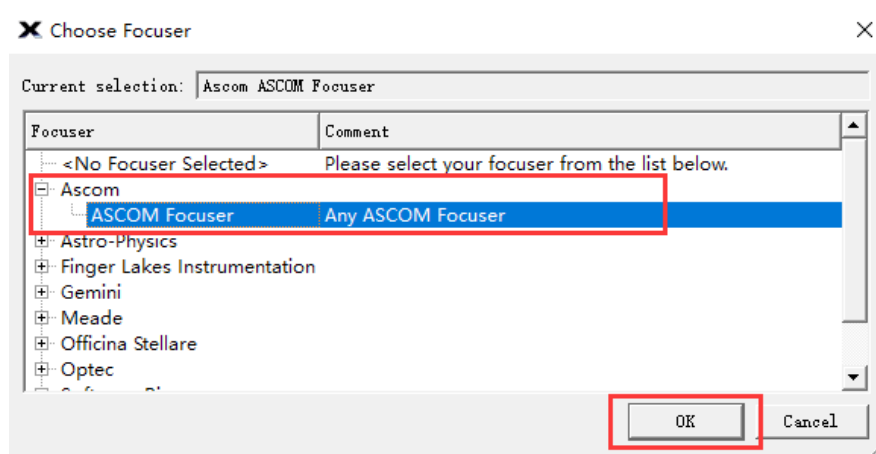
1. Open “Telescope” menu, and select “Telescope Setup”



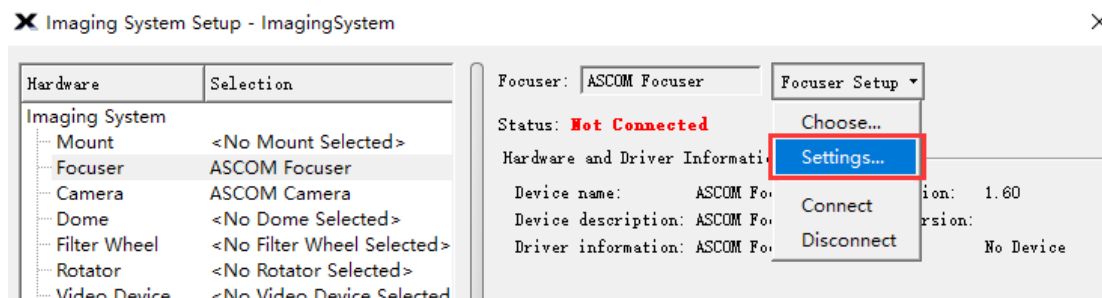
2. Select “Focuser Setup”



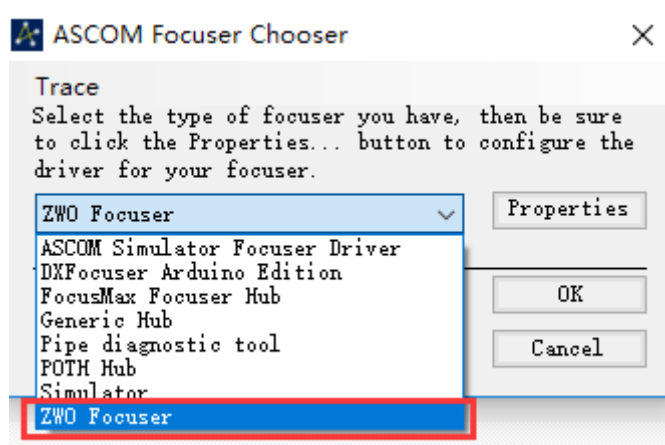
3. select ASCOM Focuser



#### 4. Setup the settings of ASCOM focuser.



#### 5. Choose ZWO Focuser



### Additional Installation Information

There is significant torque from the EAF stepper motor. We recommended setting the 0 position and the maximum number of steps as a first step to prevent possible damage to the focuser.

#### For the standard bracket installation:

The 0 position is recommended to be set to the position when the focuser is fully retracted.

The maximum number of steps is recommended to be set to a limit position less than or equal to the full focuser stroke.

#### For the curved saddle installation:

The 0 position is recommended to be set near the focus of the focus of the focus holder.

---

The maximum number of steps is recommended to be set to a limit position less than or equal to the focus seat stroke.

## Manual Focus Control

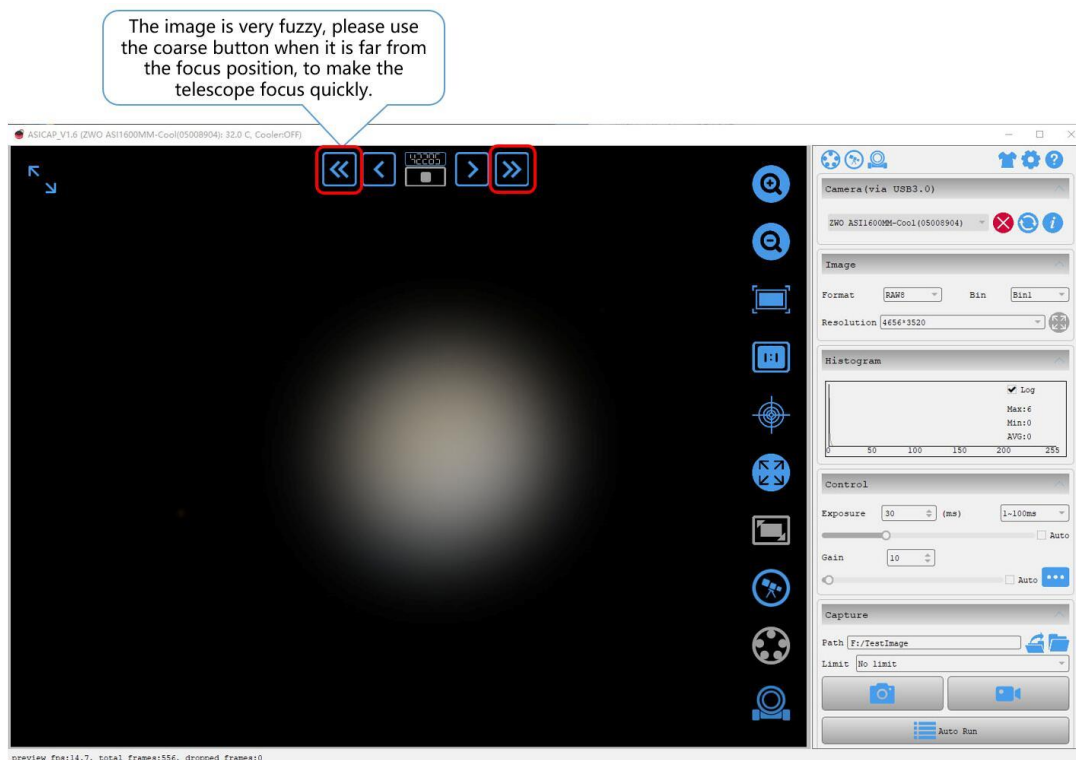
Your EAF is able to be manually controlled and there are two ways to achieve this. One is via the optional hand controller and secondly via the astronomy software package in use.

We recommend you align your EAF in the daytime and use a distant target such as a building to focus on when setting up the focuser for the first time. This will help you in finding the correct focus position with plenty of light to illuminate the chosen object.

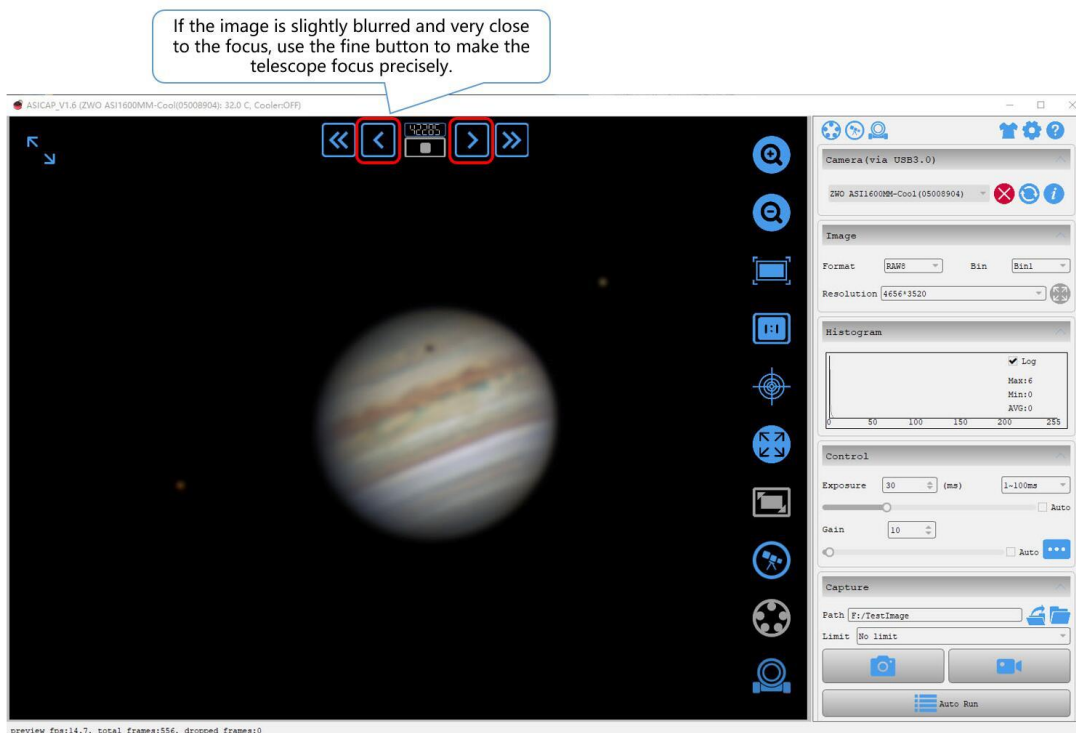
When you have found the correct focus position during the daytime, make a note of the step count number. When observing in the dark later, this will make finding the focus position easier and trouble free.

# ASICAP

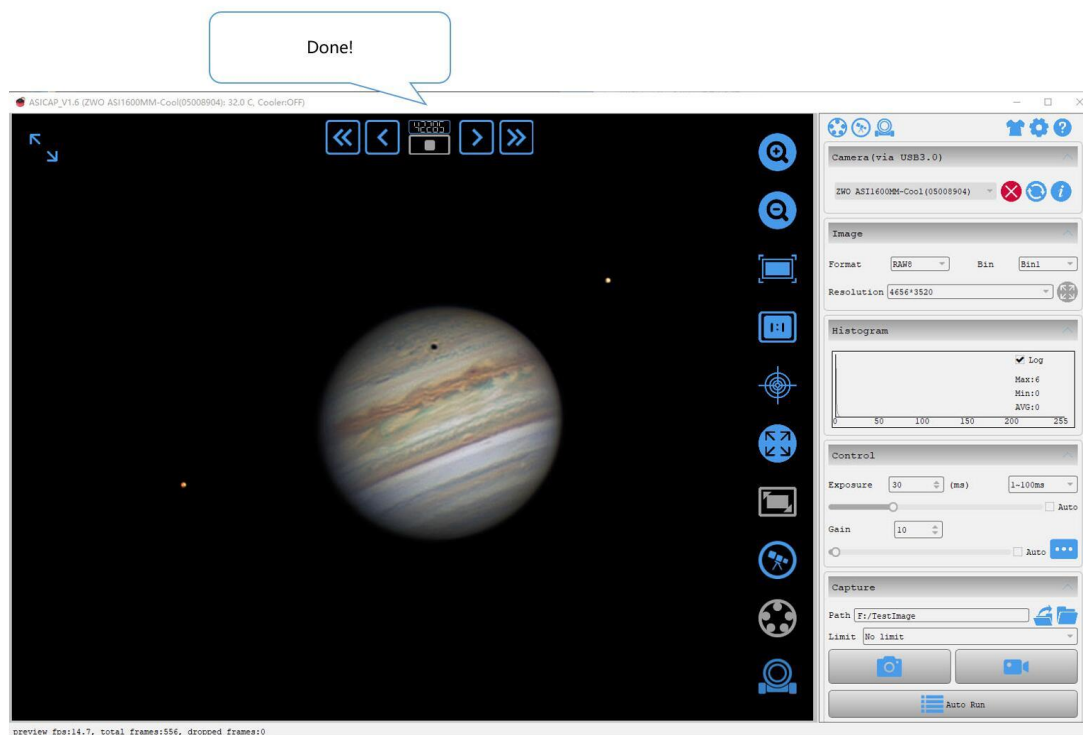
1. When the image looks very fuzzy, use “coarse” button.



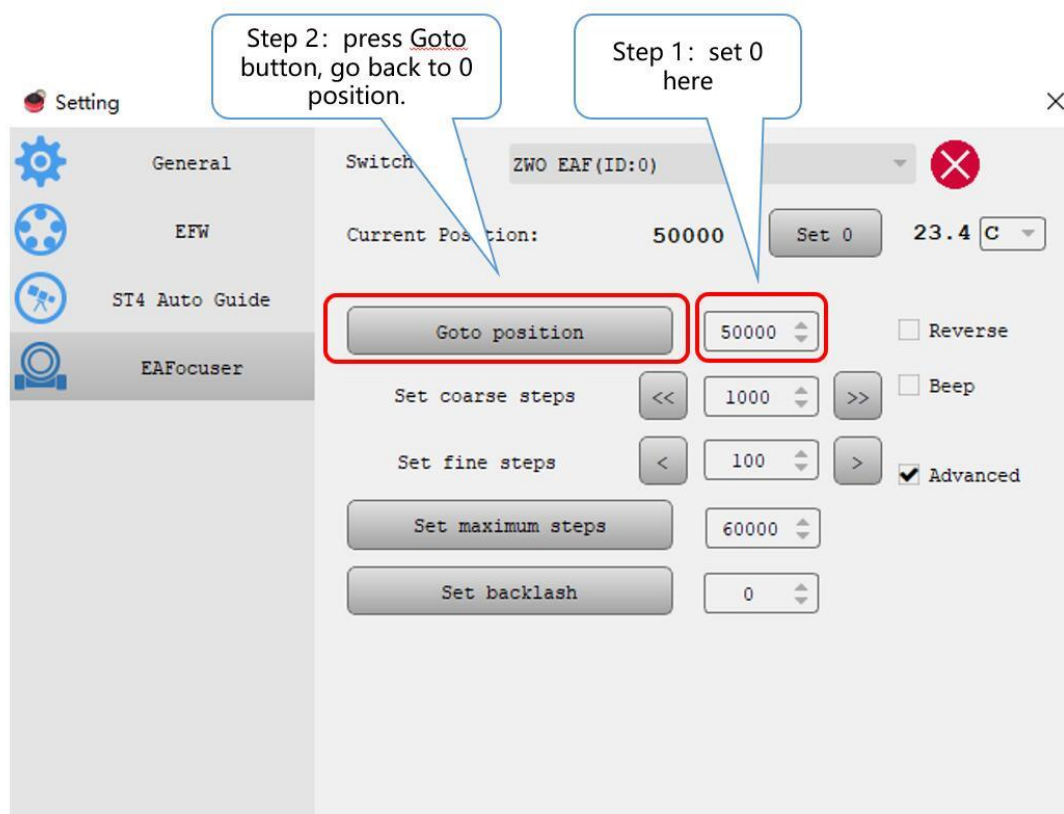
2. When the image looks slightly blurred, use “fine” button.



### 3.Done



### 4. Goto ZERO position.

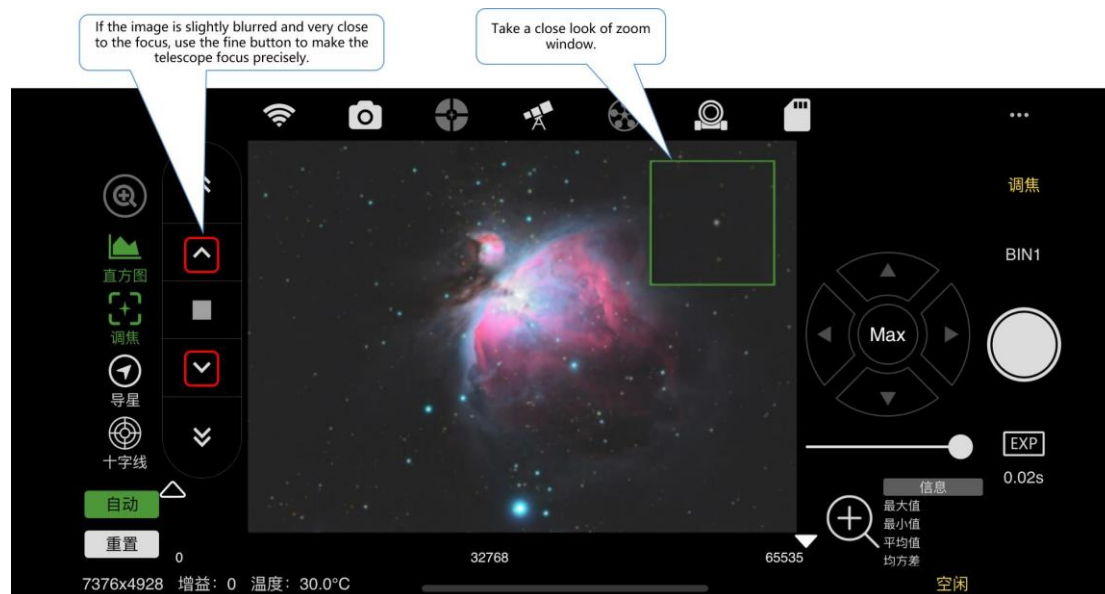


## ASIAIR

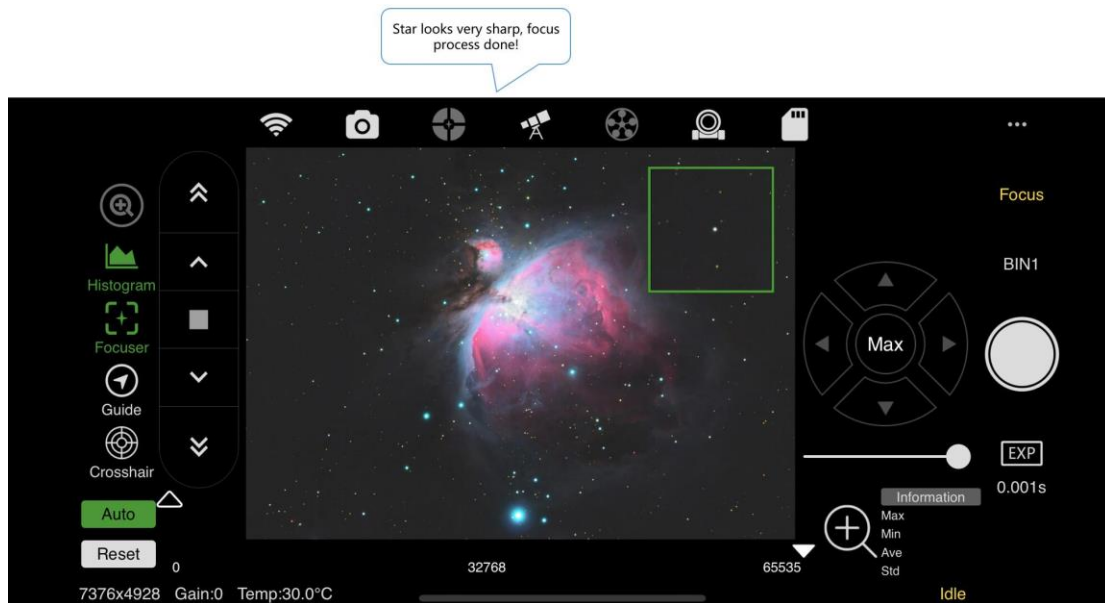
1. When the image looks very fuzzy, use “coarse” button.



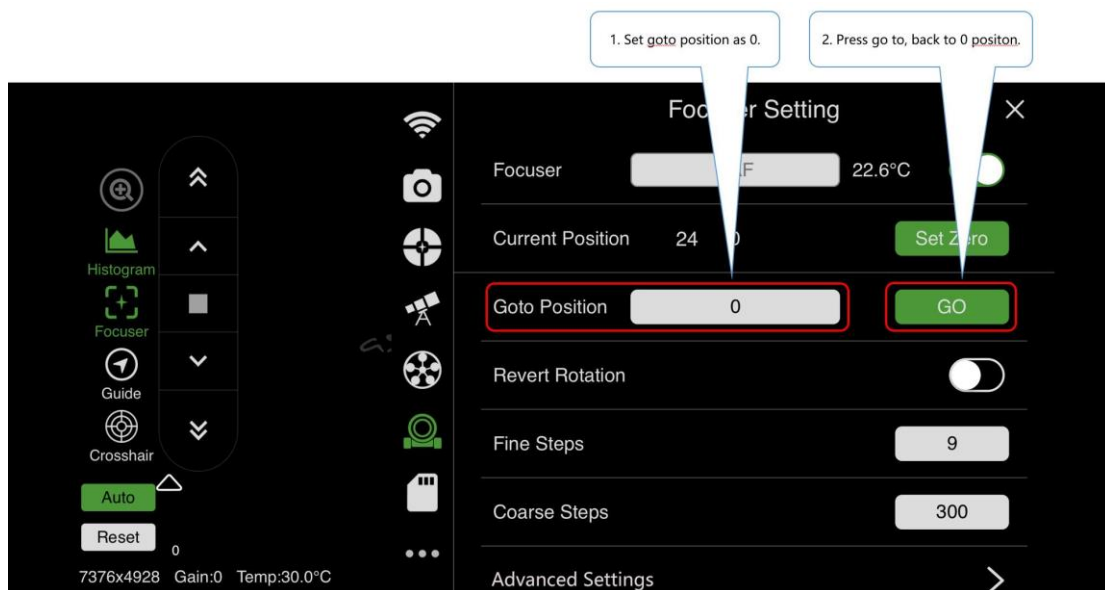
2. When the image looks slightly blurred, use “fine” button.



### 3. Done



### 4. Goto ZERO position



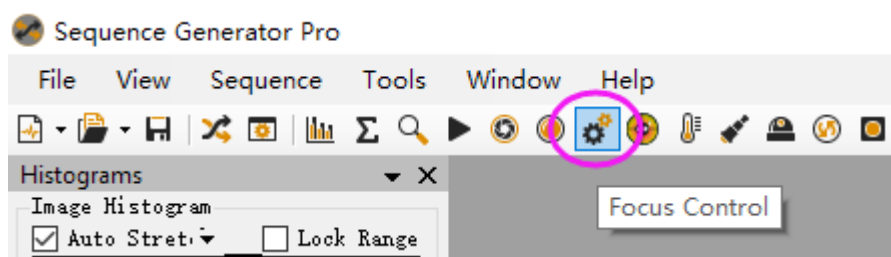
## Auto Focus Control

The ASIAIR autofocus will be implemented in a future version of the application. Autofocus is currently supported via a number of other software packages.

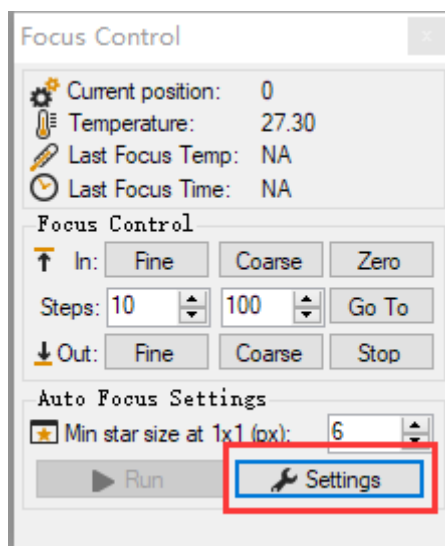
### Sequence Generator Pro

SGP's autofocus is very easy to use. When using SGP please set the freewheel setting in the ASCOM driver to 0 to avoid affecting the focusing speed.

1. Open the focus control dialog box

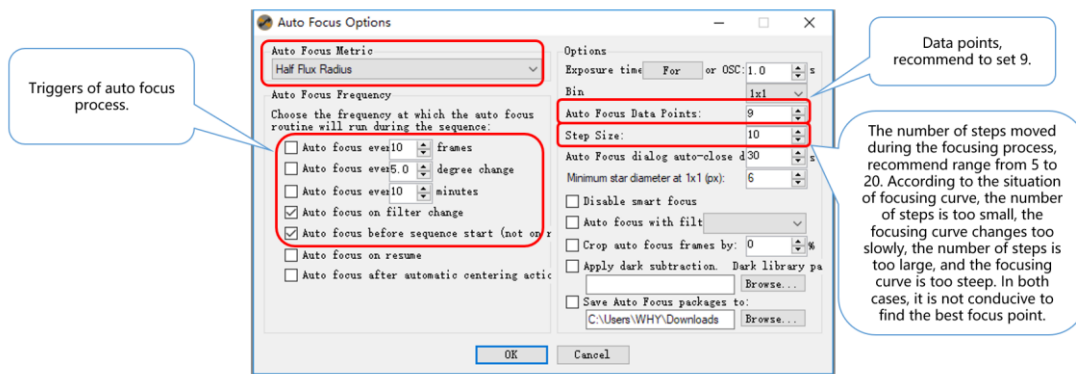


2. Enter the settings menu by clicking the setting icon

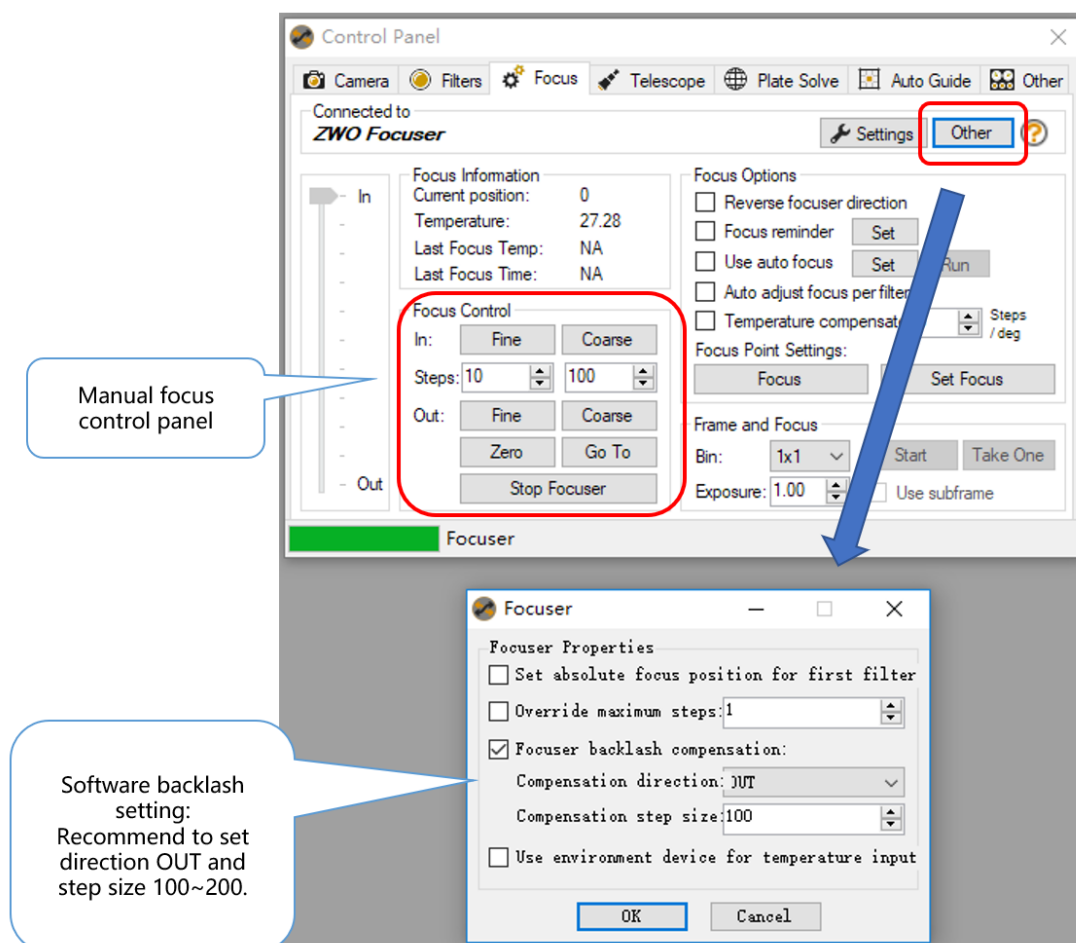


3. Set the Auto Focus parameters as below

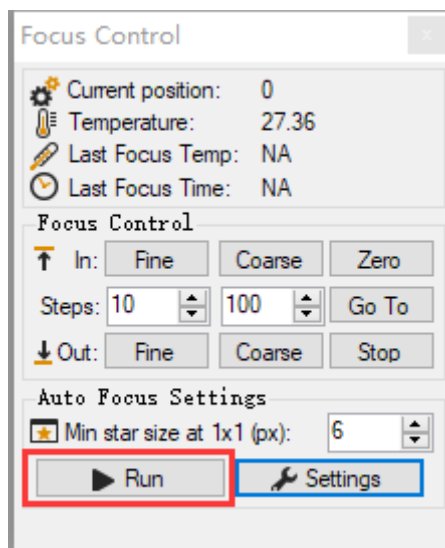




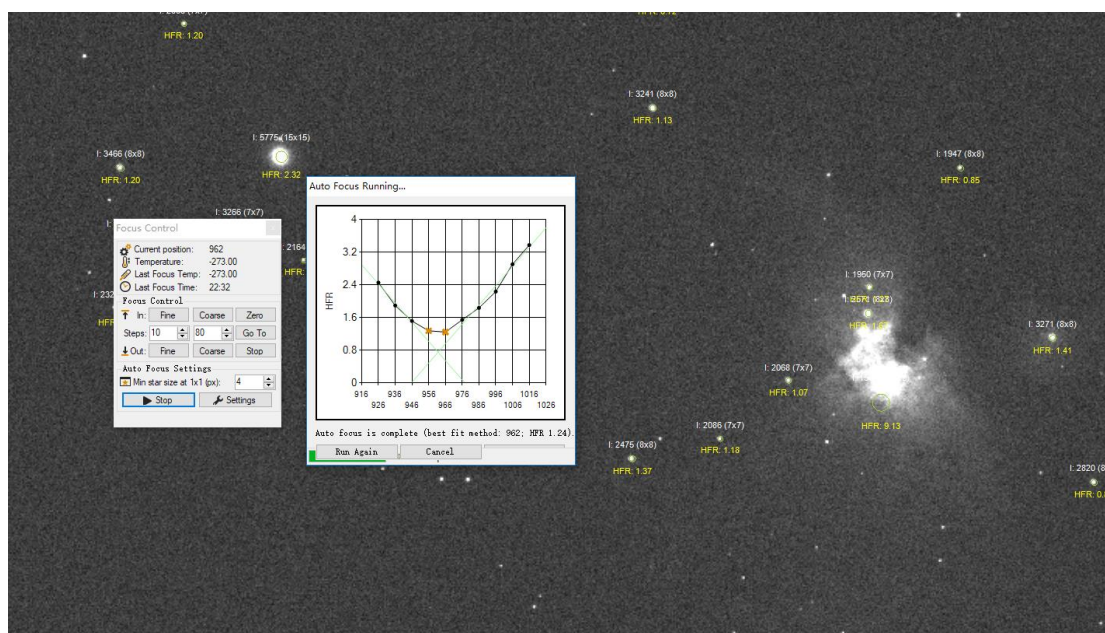
#### 4. Set the focuser backlash settings



#### 5. With the telescope roughly in focus before you start, click the run button to start the autofocus procedure

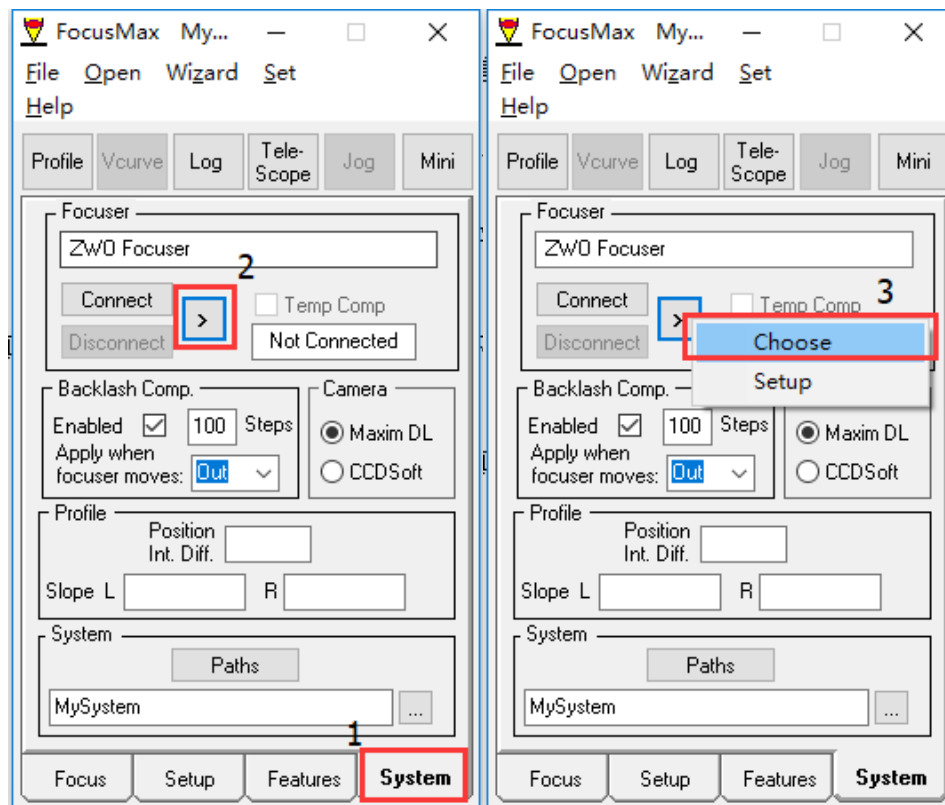


SGP will automatically take exposures and move the focuser steps drawing a V curve tracking the stars HFR value. Once the curve is complete SGP will drive the focuser to the best measured value.

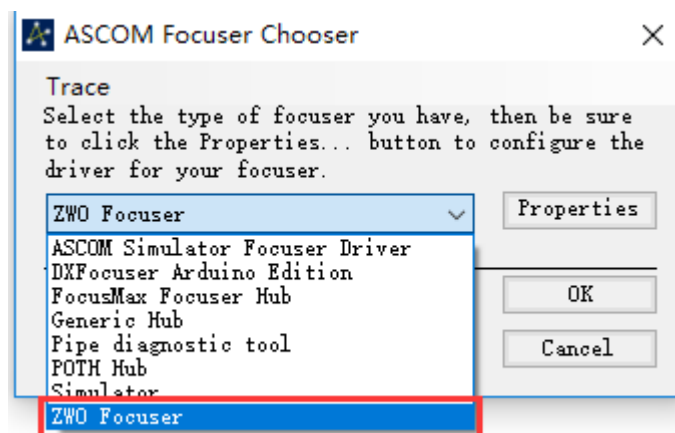


## FocusMax

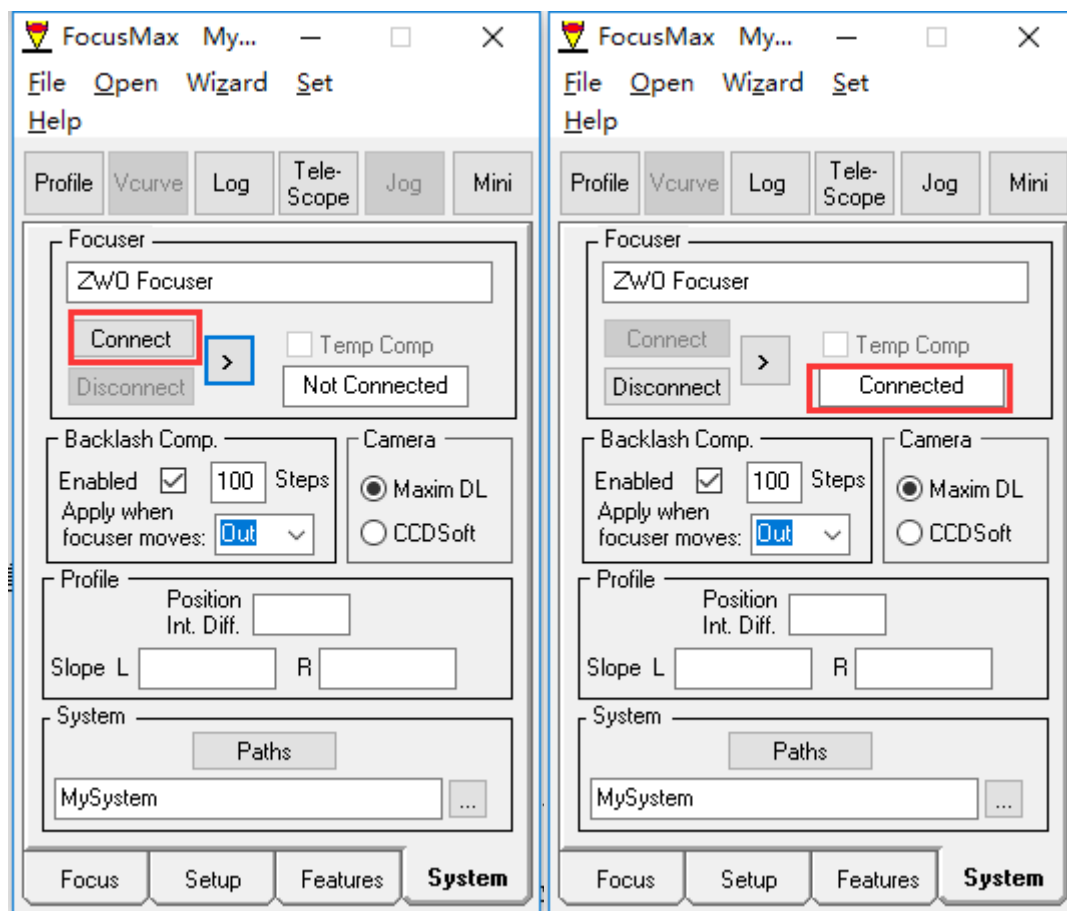
Step 1: Set up the camera. Open the software, click System to enter the settings interface. Click the button 2 as shown below, click Choose to enter the EAF settings menu.



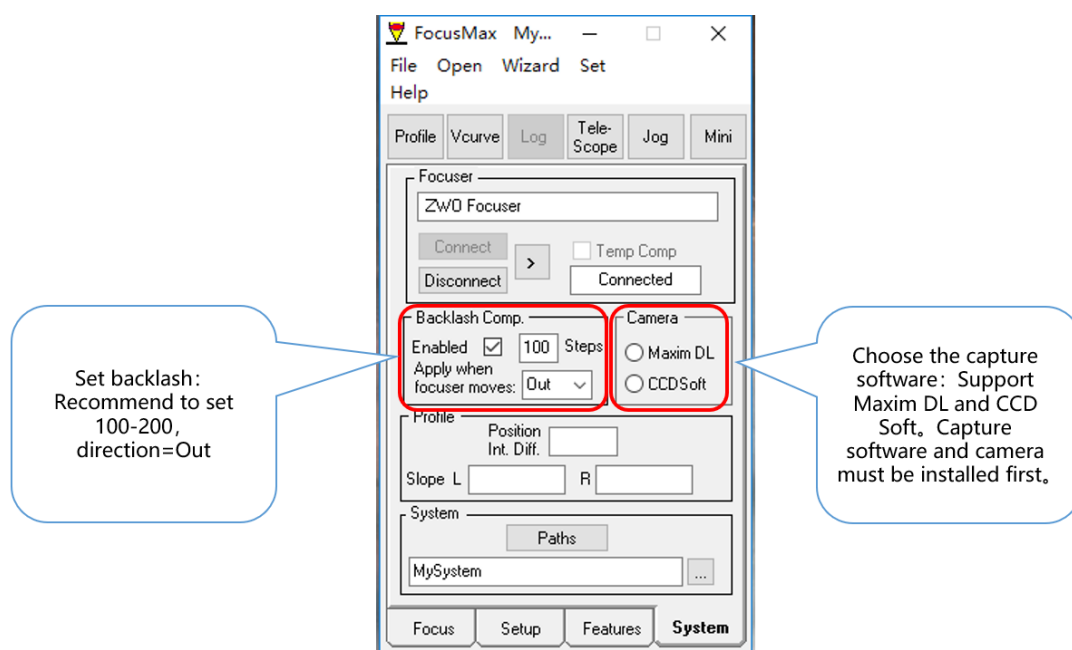
Step 2: Select the ZWO Focuser in the dialog and click OK.



Step 3: Next, connect the EAF. Click the Connect button and wait for the connection to be made



Step 4: Next set the Backlash Compensation and Camera Control



## Step 5: Set the Exposure and Focus Mode

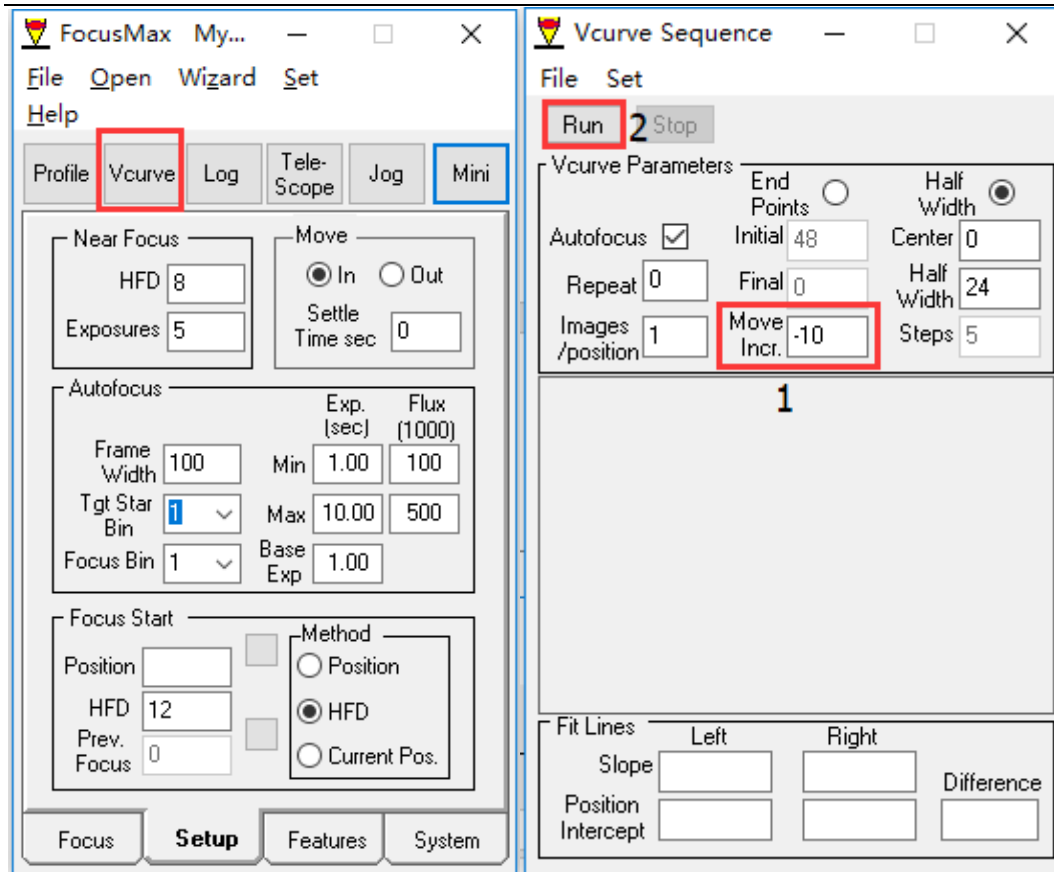
The screenshot shows the FocusMax software interface with several key settings highlighted by red boxes and callouts:

- Move Section:** The **In** radio button is selected under the **Move** heading. A callout states: "Direction in focusing: Recommend to set IN."
- Exposure Section:** The **Exp. (sec)** column in the Autofocus table is highlighted. A callout states: "Exposure in focusing: Recommend to set Min=1, Max=10, Base Exp=1." The table shows:
 

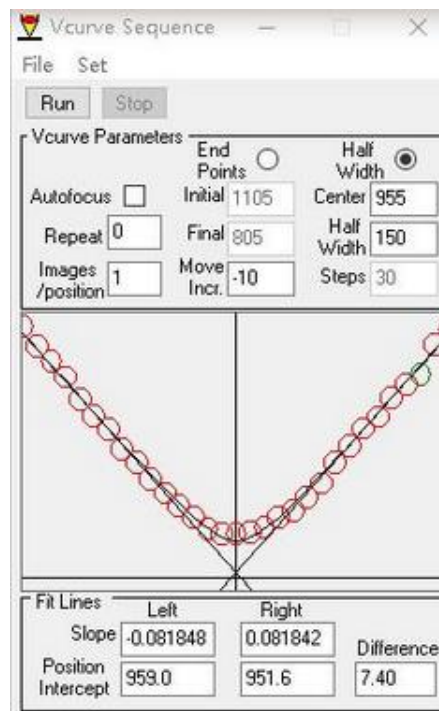
|          | Exp. (sec) | Flux (1000) |
|----------|------------|-------------|
| Min      | 1.00       | 100         |
| Max      | 10.00      | 500         |
| Base Exp | 1.00       |             |
- Focus Start Section:** The **HFD** radio button is selected under the **Method** heading. A callout states: "Focusing method: Recommend to set HFD".

The interface also includes a menu bar (File, Open, Wizard, Set, Help), a toolbar (Profile, Vcurve, Log, Tele-Scope, Jog, Mini), and a bottom navigation bar (Focus, Setup, Features, System).

Step 6: Open the Vcurve dialog box and set the number of steps per move (generally set to -10). Run the autofocus routine:



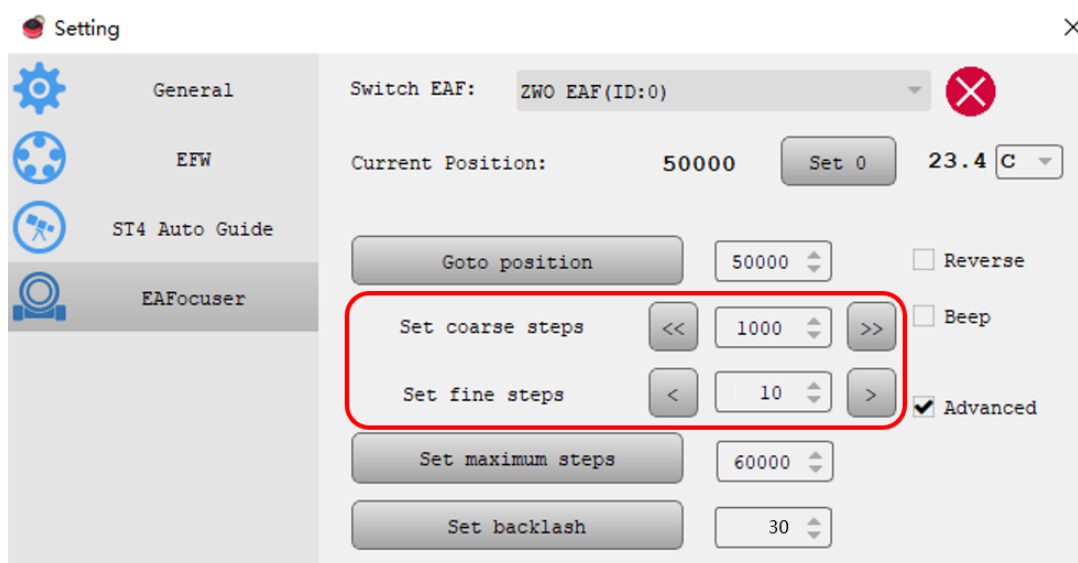
After the V curve is drawn the focuser will be driven to the optimal focus position.



## Measuring the Focuser Backlash

It is relatively easy to measure the focuser backlash. The following example uses ASICAP as the software application driving the EAF:

Set the coarse step size to 1000 and the fine step size to 10.



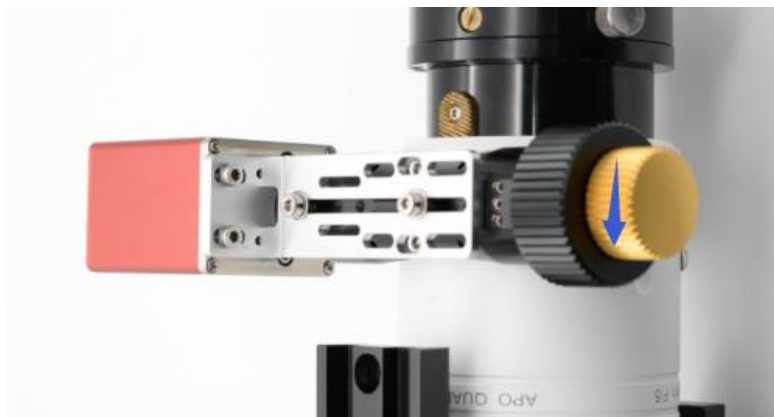
Click the Coarse Button and move the focuser out by 1000 steps.



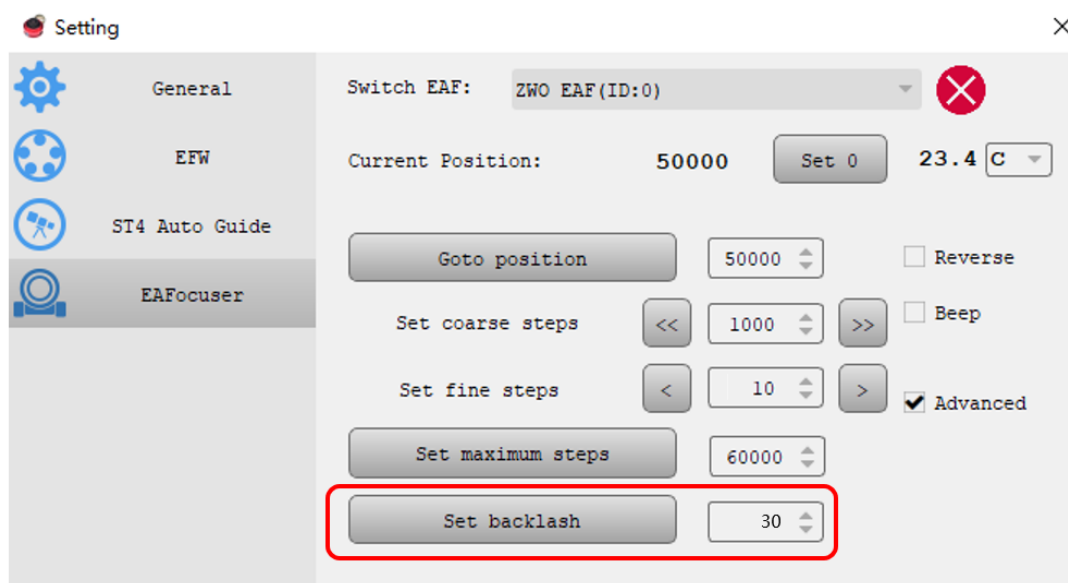
Next set the fine tuning steps to 10 and move the focuser in and observe that the focus knob on the side of the focus rotates.



Click the fine adjustment button that moves the focuser inwards and click once. Observing the focuser knob on the opposite side to the EAF note how many steps the EAF moved before the knob moves. The number of times you click x 10 is the number of steps measured as backlash.



Set the number of steps in the Set Backlash settings box



If you want to measure the backlash setting more accurately then chose Step Size 5 in the fine step setting and repeat the above steps.



---

For repairs and other services, please contact us.

Email address: [info@zwoptical.com](mailto:info@zwoptical.com)

Tel: 0512-6592 3102

For cameras purchased from agents, please contact your dealer for after-sales service.

## 6 Warranty and Return Policy

We provide 2-year warranty for our products.

We will offer the repair service for free or replace the item for free if the EAF does not work properly within the warranty period. After the warranty period, we will continue to provide repair support and service on a charged basis.

This warranty does not apply to damage that occurred because of abuse or misuse, or damage caused by a fall, or any other accidental failures after purchase.

The customer must pay for shipping when shipping the EAF back for repair or replacement.

If you get a faulty EAF, please contact us as soon as possible through email: [info@zwoptical.com](mailto:info@zwoptical.com). Please describe the problem in detail, and we will do our best to solve the problem. Most instances are perceived problems which are caused by a bad driver install or software configuration.

For customers who bought the camera from our dealer, the dealer is responsible for the customer service.