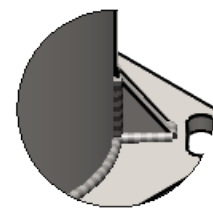
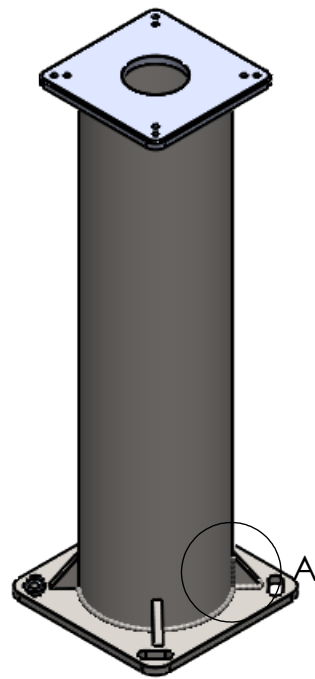
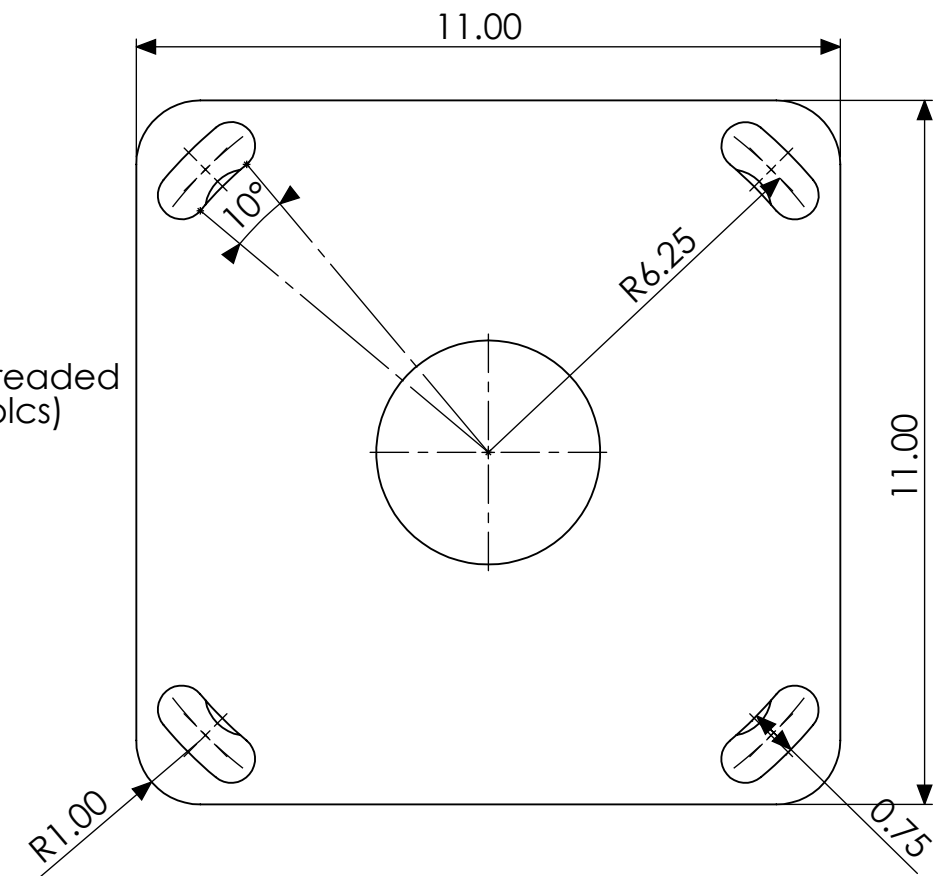
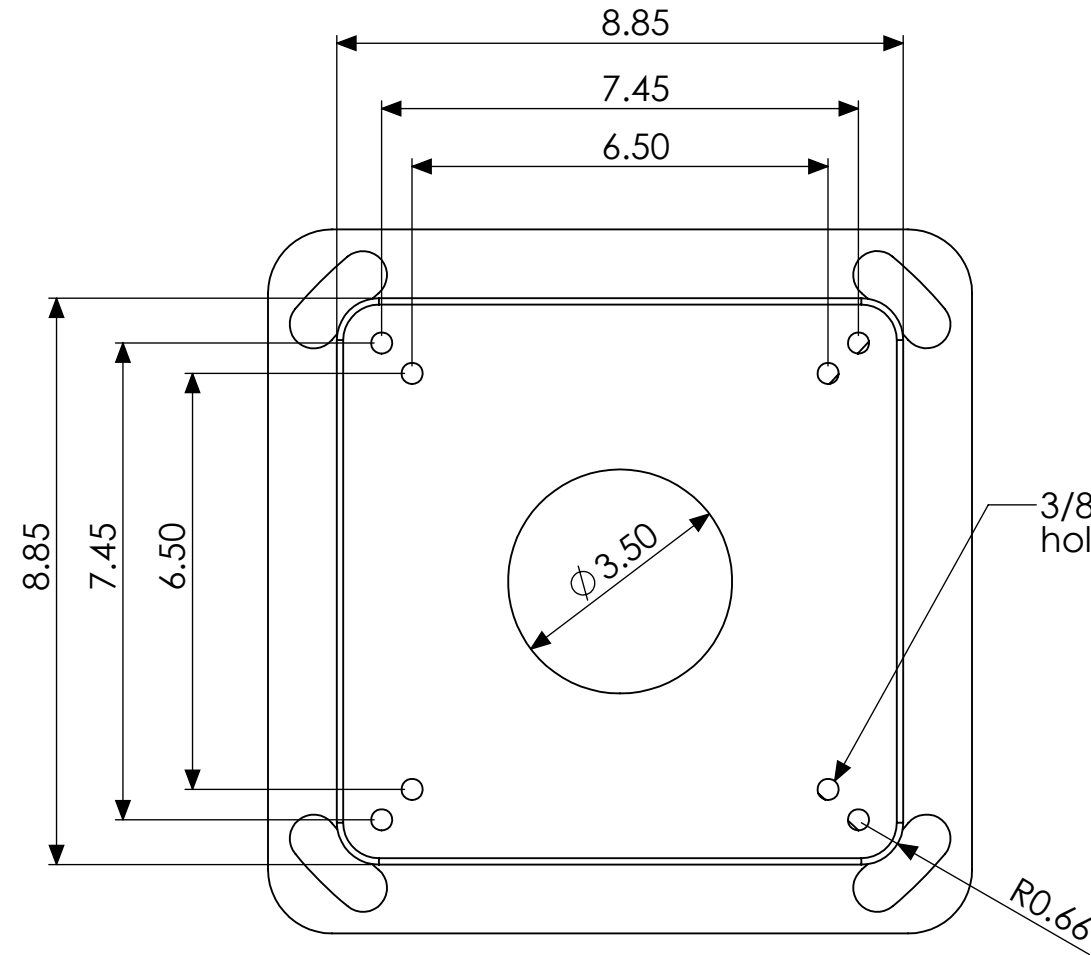


Stocked Heights

12"
18"
24"
30"
36"
42"
48"



DETAIL A
SCALE 1 : 5

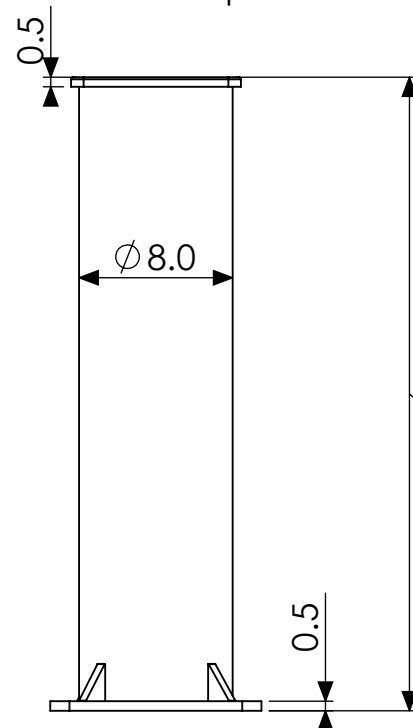


Plate Thicknesses

Note:

1. Triangular supports are unique to the MX/MYT Permanent Pier.
2. MYT holes added 2018*.
3. Custom heights require 8 weeks for fabrication.

Overall height purchased
(stocked heights listed in table)

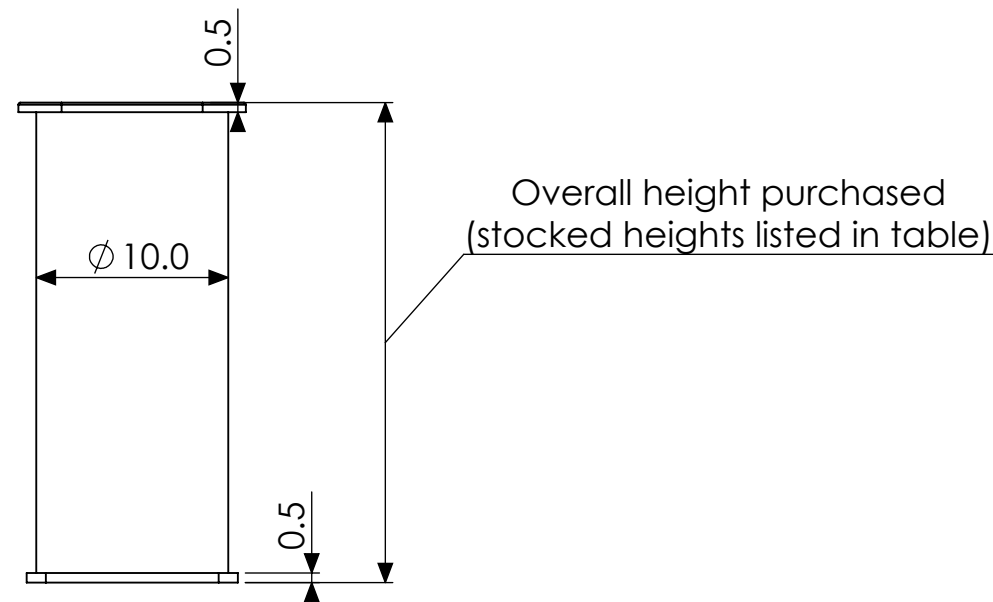
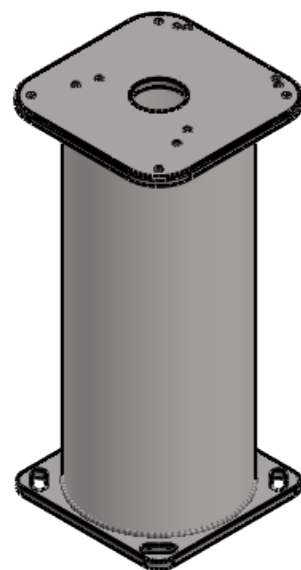
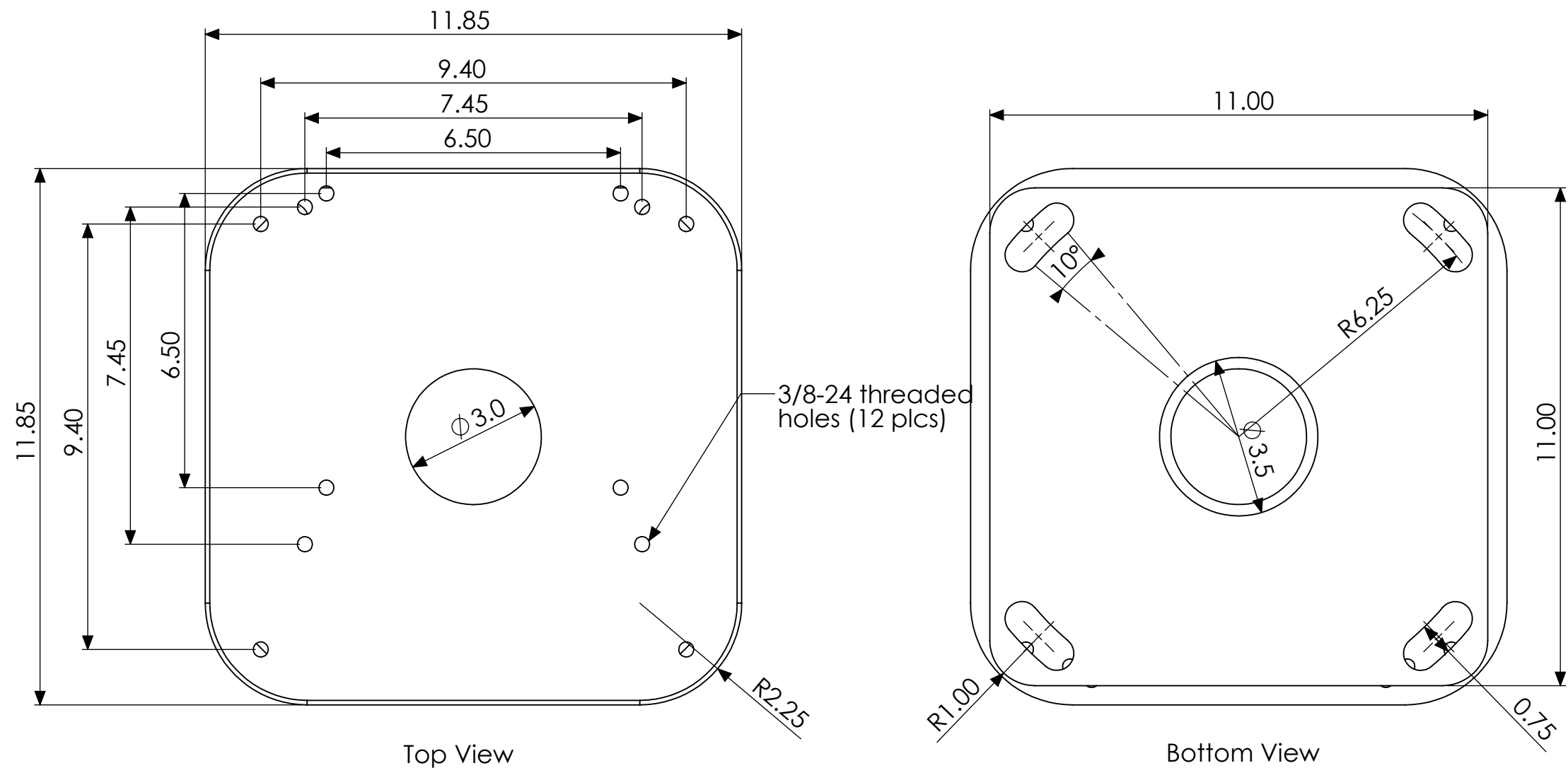
*Software Bisque still has stock of piers without MYT holes



PROPRIETARY AND CONFIDENTIAL

DIMENSIONS ARE IN INCHES TOLERANCES: THREE PLACE DECIMAL ±		Software Bisque	
MATERIAL		Part Number:	
FINISH		Part Name: MX/MYT Permanent Pier	
DO NOT SCALE DRAWING		SIZE A	Rev
SCALE:		Date last edited: 7/25/2018	SHEET 1 OF 2

Stocked Heights
12"
18"
24"
30"
36"
42"
48"



- Note:
1. Custom heights require 8 weeks for fabrication.
 2. MX holes added in 2011 (rev B).
 3. MYT holes added 2018 (rev C)*

*Software Bisque still has stock of piers without MYT holes



PROPRIETARY AND CONFIDENTIAL

DIMENSIONS ARE IN INCHES TOLERANCES: THREE PLACE DECIMAL ±		Software Bisque	
MATERIAL		Part Number:	
FINISH		Part Name: ME II/MX/MYT Permanent Pier	
DO NOT SCALE DRAWING		SIZE A	Rev
SCALE:		Date last edited: 7/25/2018	SHEET 2 OF 2